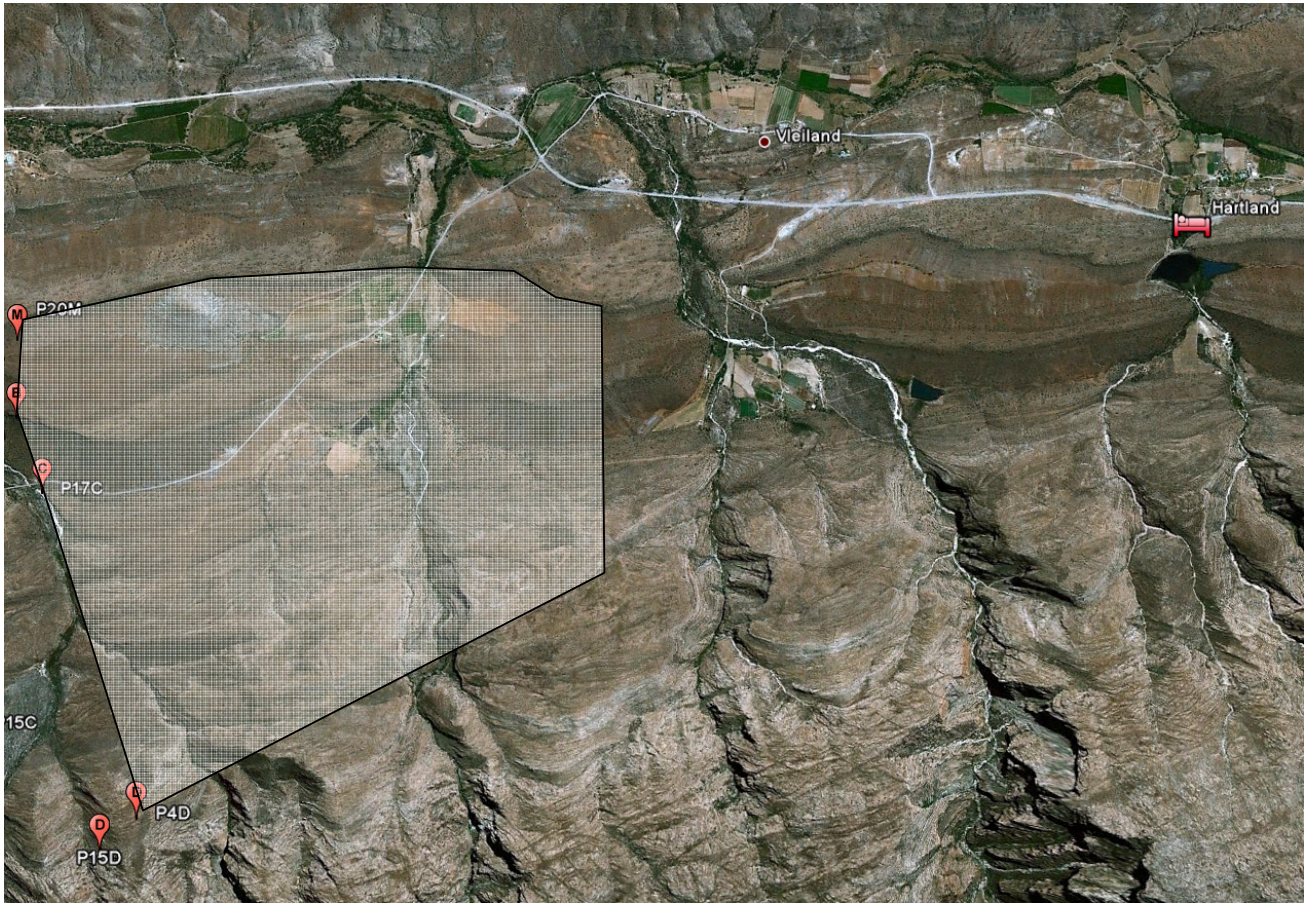


# Soetdoornkloof



## SOETDOORNKLOOF (PORTION 26 OF FARM 232 LAINGSBURG)

**GPS Location: 33°22'59.64"S 21° 9'7.56"E**

Measuring 601.6 Hectares

This picturesque farm is situated in the Vleiland Valley, between the Klein Swartberg Mountains and the Witteberge.

It is accessible from Route 62 via Seweweekspoort (46km from turnoff) or via the N1 from Laingsburg 48km East or even via Anysberg from Ladismith.

It has numerous buildings and outbuildings, including four labourer's cottages, a three bedroomed house with an attic, garden and beautiful views.

Adjacent to the house is a General Dealer store. There is also an additional 2 bedroomed house, a shed used previously for growing chickens, and a large storage shed in very good condition. There are further outbuildings in need of repair.

It has a large natural dam, fed from the mountains almost all year round.

It has X boreholes, delivering xx litres of water per hour each

At least 10 hectares are under irrigation.

At certain times of the year the fields can be gravity fed from the dam.

The mountain lands are ideal for grazing sheep and cattle. They also give access to magnificent mountain walks and natural streams.

***Asking Price R 3.2 million***